

---

# NWTC V2 Instructions

---

Nerzhul



[HTTPS://WWW.ALIEXPRESS.COM/STORE/4451039](https://www.aliexpress.com/store/4451039)

[www.nerzhul.cc](http://www.nerzhul.cc)

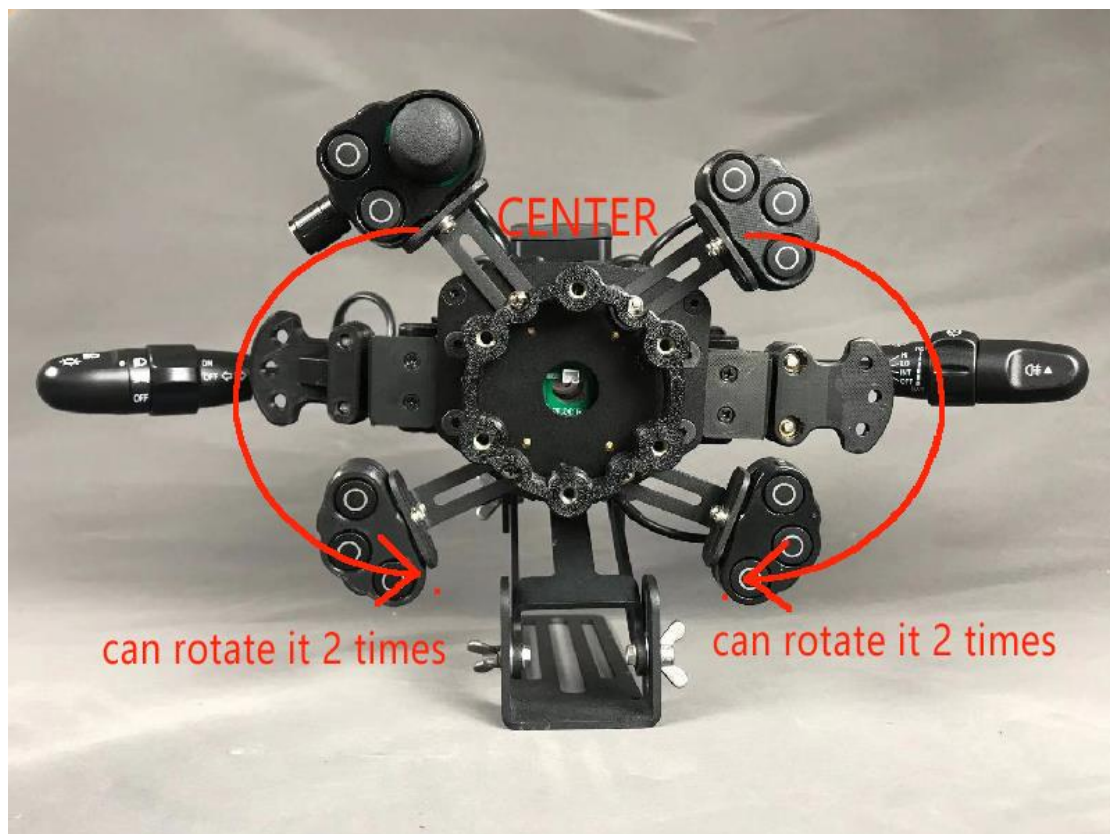
## Assembly Parts

Make sure you go through the manual as a whole before assembling it

### ★★Adjust The Mounting Angle (very important) ★★

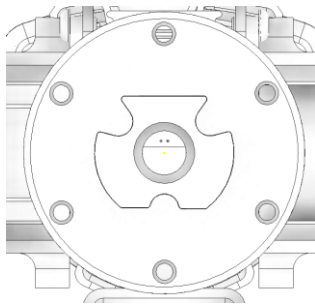
1. Gently rotate the front panel to the right until it cannot be rotated
2. Turn the front panel 3 or 4 turns to the left to make sure you have a margin of 2 turns left and right
3. You can now attach the hub to the steering wheel base

★★MAKE SURE YOU HAVE MARGIN OF 2 TURNS TO LEFT AND RIGHT BEFORE INSTALL TO THE WHEEL BASE!!! ★★

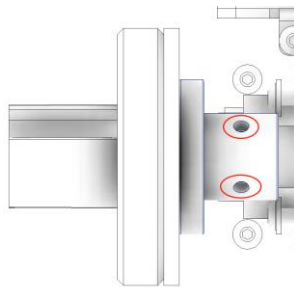


## Install the rear panel

- Make sure you've got the right Angle

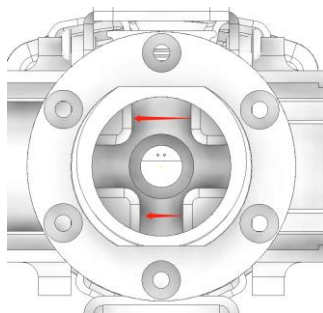


Back view

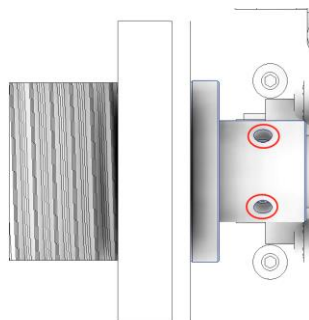


Right view

- G27
- Back View :
- Two holes in the top side



Back view



Right view

- Thrusmaster
- The spacing on the top is greater than the spacing on the bottom

- Direct drive wheel with servo motor or step motor no need to check the angle



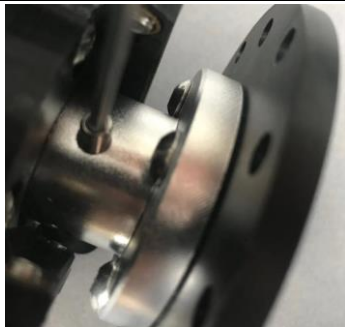
- Place the bottom facing up
- Rotate the panel until 2 holes are visible



- Plug in the rear panel , aim the two holes

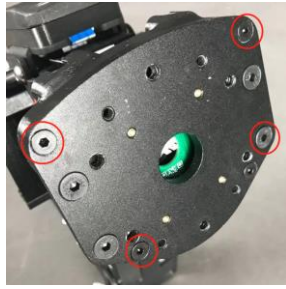


- Hold the screw in the way as shown



- Tighten the screws with two holes

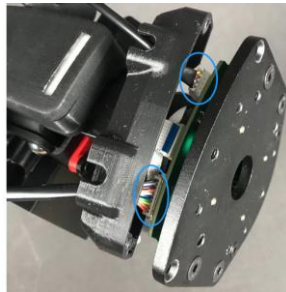
## Install the buttons panel



- Remove the 4 screws



- Insert the connector from the position in the diagram.
- The picture just shown the Top side, the bottom is the same way



- Plug in the connector like the diagram



- Tighten the four tapping screws



- Use M3 cross screws with gasket to mount the small 'L' bracket

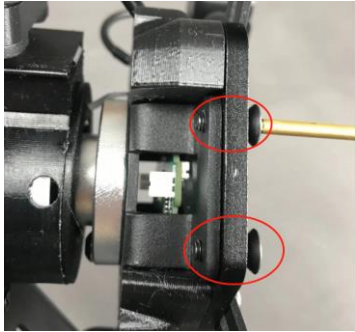


- Use M4 cross screws with gasket to mount the small 'L' bracket to the front panel

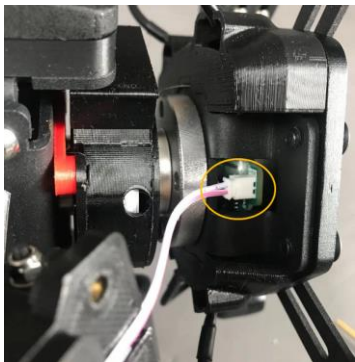
## Install the magnetic shifter



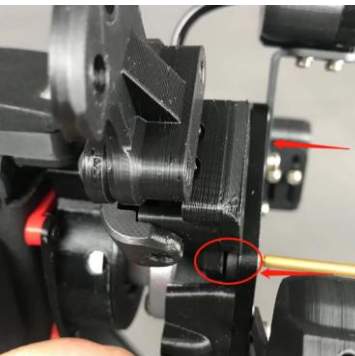
- Prepare the two magnetic shifter



- Release the two screws until the screw bottom close to the bracket panel
- **Warning : do not unscrew completely**



- Plug in the shifter connector



- Press the magnetic into position as shown
- Tighten the released screws above again
- The other side does the same way

## Install the turning light and wiper control lever



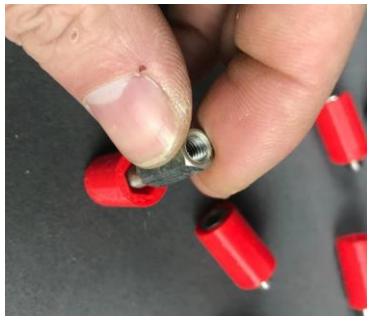
- Plug in the tuning light lever and wiper lever



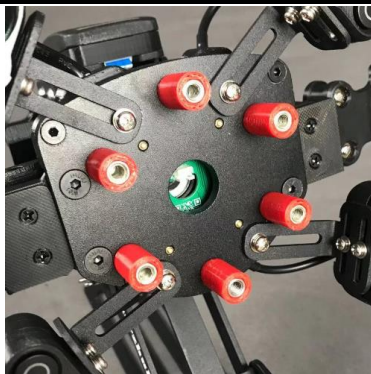


- Insert the wire connector

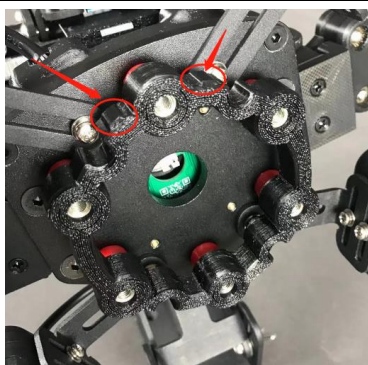
Install the Higher column



- Insert the hexagonal copper column into the red cylinder



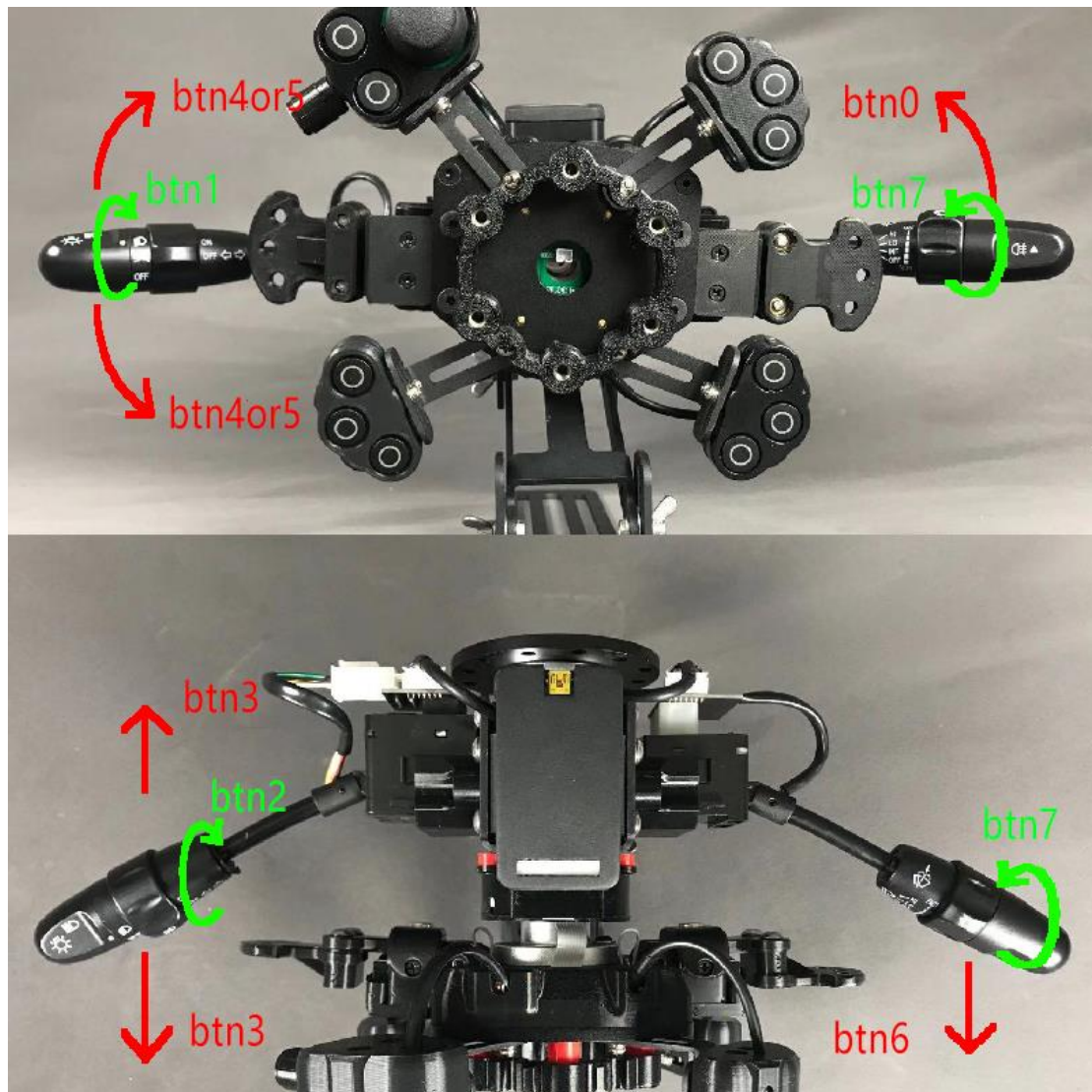
Install the cylinder to the position as shown



Install the shell cover ,note there are two small bumps in the top

## Set Key Mode

Attention : all button numbers is showing the ETS/ATS game readed, other games maybe plus 1(like in ETS read button is btn0 other game maybe read btn1)



How to setting the key modes:

- Make sure the btn3 is not in 'on' states, you can press the btn3 twice to make it to 'off' states,
- Simultaneously twist button 7 and press button 6 and wait 5 seconds , when the board lights flash red , indicates that you are in the setup mode,
- Twist the btn7 or press btn6 , blue indicates the ETS mode, yellow indicates the normal mode.
- What's different with ETS and normal mode:



- ETS mode -- the light mode switch and wiper lever switch is identify as one button, its simulate the people press button for many times , So you just need to make sure that the switches are in the same position as the vehicles in the game when you enter the ETS game.
- Normal mode: all switches are identify as a separate switch ,the light mode switch is reading to 3 buttons and wiper lever switch is reading to 4 buttons

## Set buttons in The Euro truck simulator

start the game , go to the controls setting add the NWTC to the last line. Then you can setting the buttons on the “keys & buttons”(please setting the buttons on the “Secondary”)

**Uncheck the “Automatic blinker turn off”**



Recommended settings

|                      |   |          |
|----------------------|---|----------|
| Left-Turn Indicator  | [ | Joy 按钮 5 |
| Right-Turn Indicator | ] | Joy 按钮 4 |
| Hazard Warning       | F | Joy 按钮 2 |
| Light Modes          | L | Joy 按钮 1 |
| High Beam Headlights | K | N / A    |
| Beacon               | O | N / A    |
| Horn                 | H | N / A    |
| Air Horn             | N | N / A    |
| Light Horn           | J | Joy 按钮 3 |
| Wipers               | P | Joy 按钮 0 |

|                                     |       |          |
|-------------------------------------|-------|----------|
| Gearbox Switch Automatic/Sequential | N / A | N / A    |
| Start/Stop Engine                   | E     | Joy 按钮 7 |
| Start/Stop Engine Electricity       | N / A | N / A    |
| Parking Brake                       | Space | Joy 按钮 6 |

### Warning:

1, Dont set the “Wipers Back” , just set the ” Wipers” is working . If you set the “Wipers Back”, you should to clear it.

2, if the car status is not fit the hardware , just press the “esc ” button and set the hardware to the right position . Or use the keyboard to adjust the status in game.