



Modify cluster use tutorial

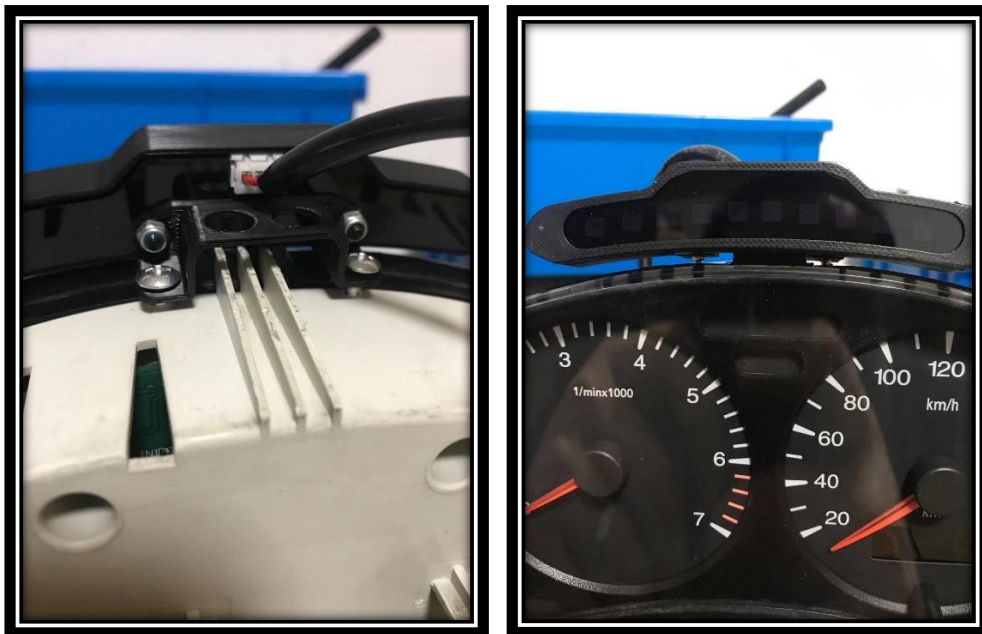
Step 1 : install simhub and plugin

Goto: <https://www.simhubdash.com/> to download the latest version and install it .then copy the "User.NerzulPlugin_cluster.dll" to the **Installation Directory**.

When you open simhub ,a new message box "new plugin detection ..." will show up ,click the "yes" button to enable the plugin.

Step2: mount the The LED headlamp unit

Warning: Gently screw in a little, make sure that both sides are pressed tight and there is no shaking, do not screw completely to the end, otherwise it will damage the accessories

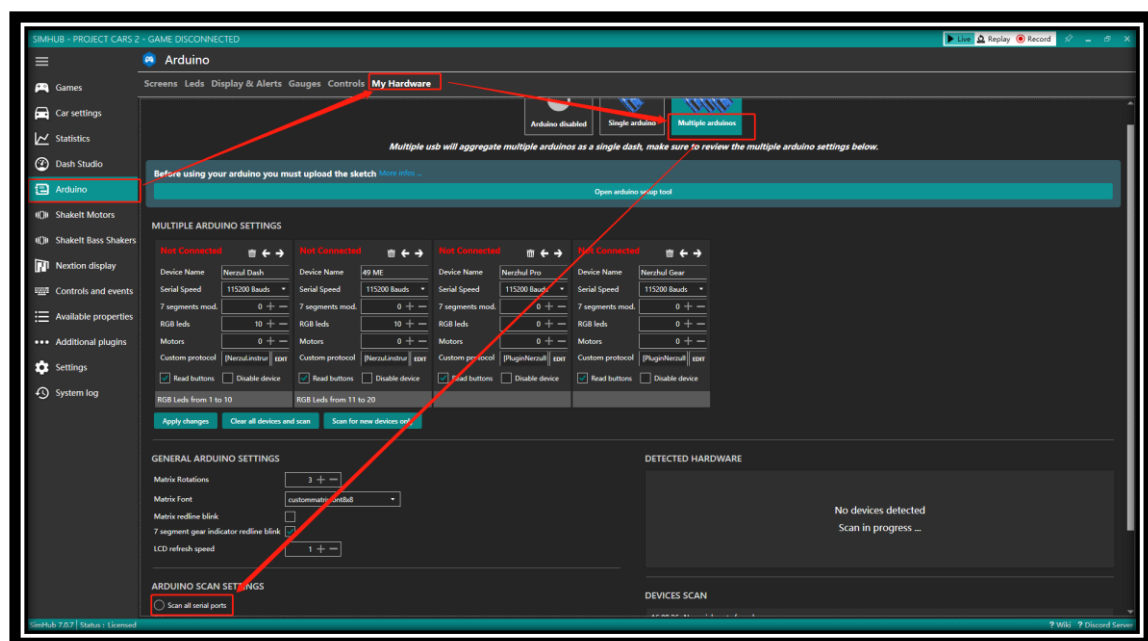


Step3:connect the usb cable and power supply

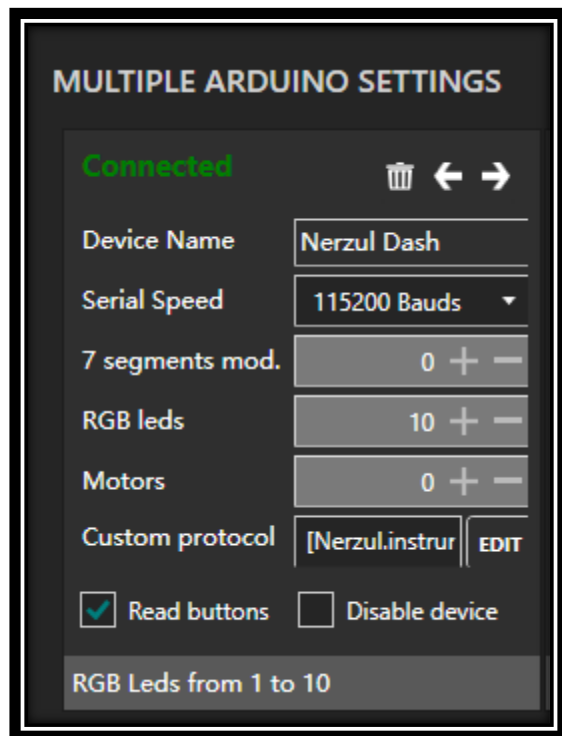


Step4: configure the hardware in simhub

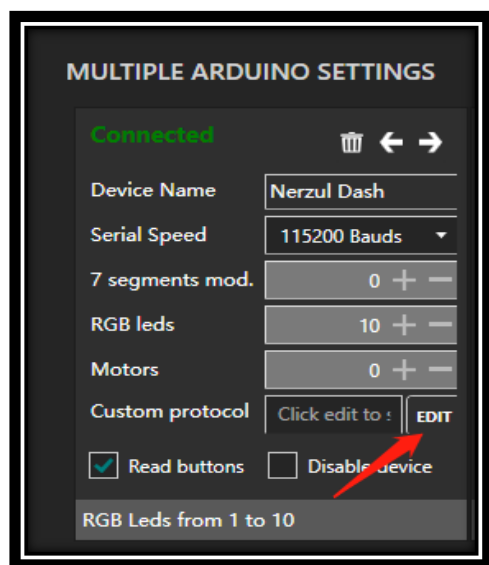
- Go to “Arduino” -> “My hardware” -> “Multiple arduinos” -> “ARDUINO SCAN SETTINGS” -> “Scan all serial ports”.

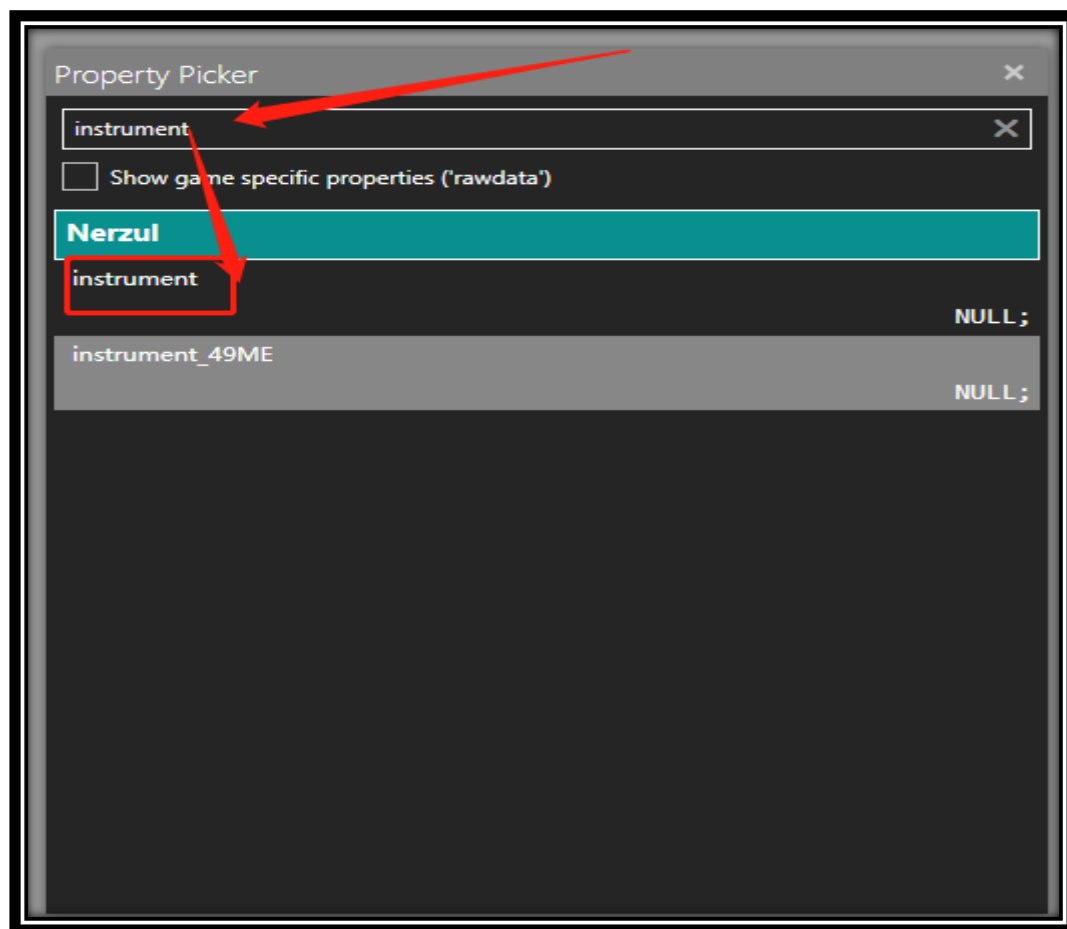
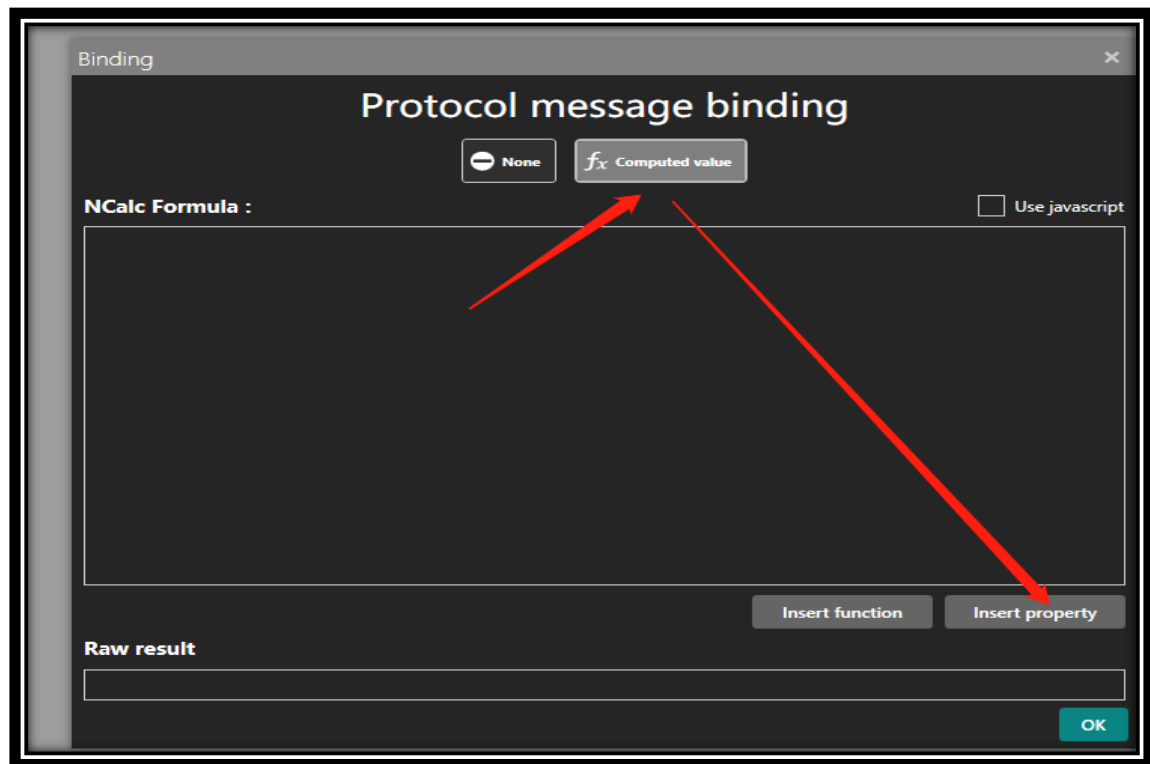


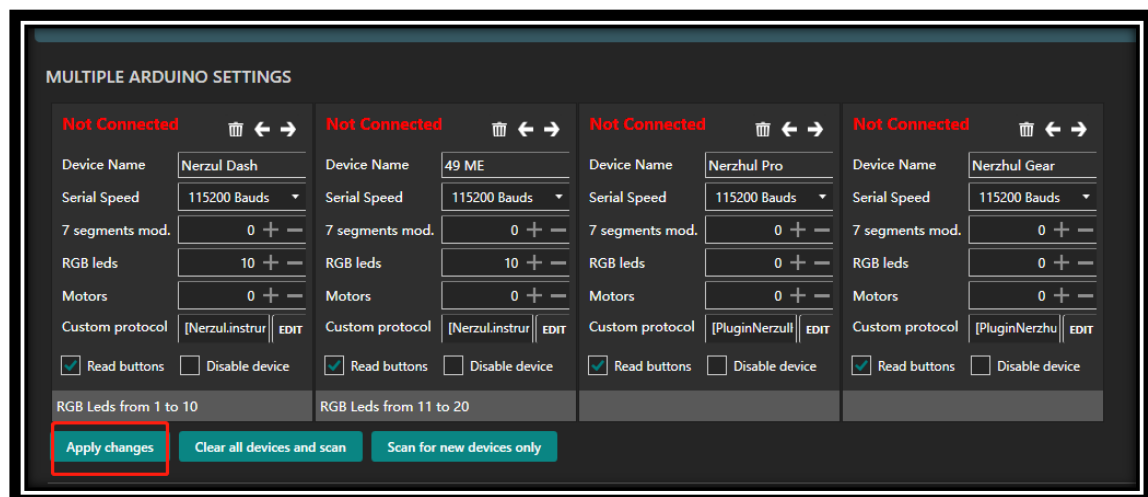
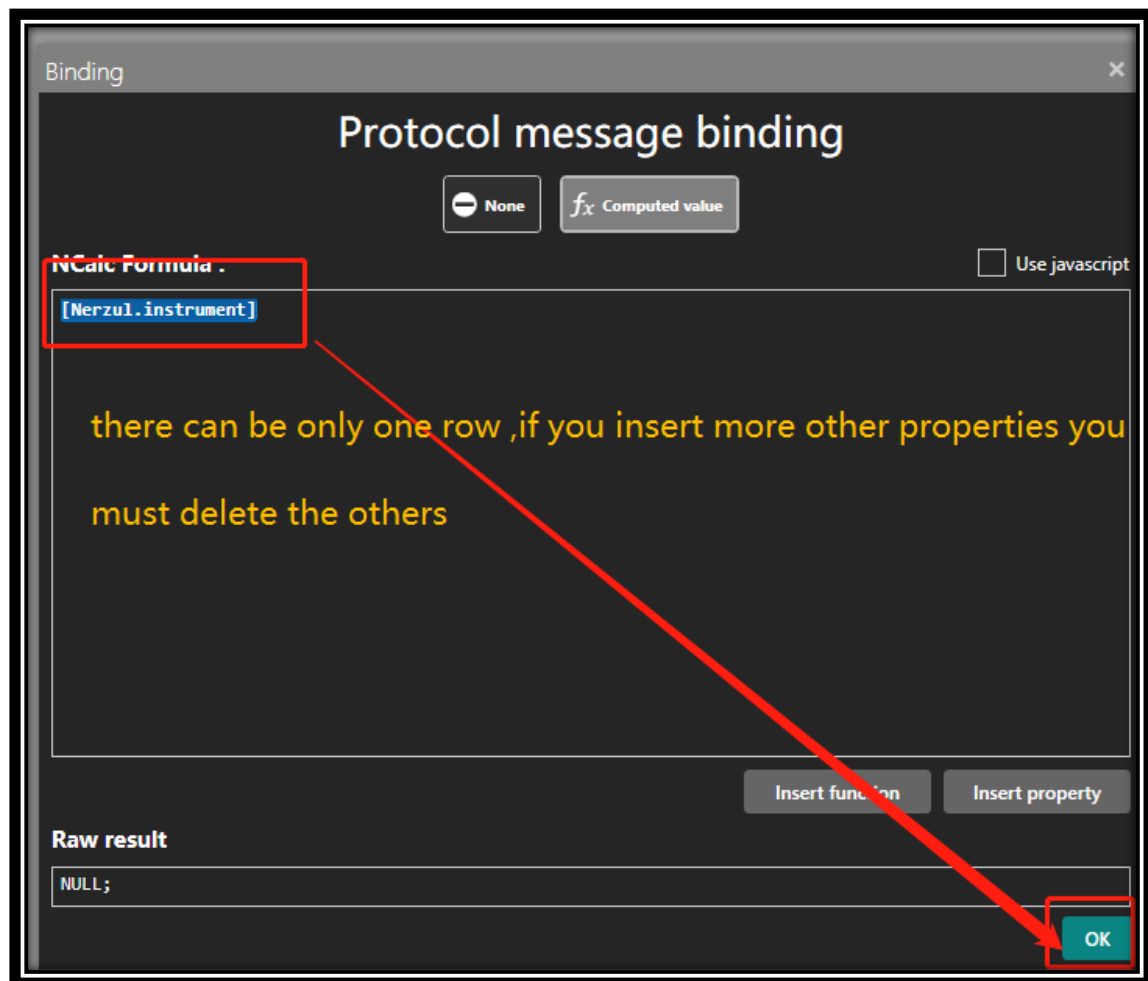
- And then the cluster will be read to simhub, you can find it in the “MULTIPLE ARDUINO SETTINGS”.



- Open the “EDIT” button in the bottom line of the device window “Custom protocol” ,click the “Fx Computed value”, then click the right bottom button named ”Insert property” , input the “instrument” in the search box .double click the “instrument [NULL]” line ,then it will be return to the Binding window. Then click the “OK” button to close the window.then click the “Apply changes” button to restart the connection.





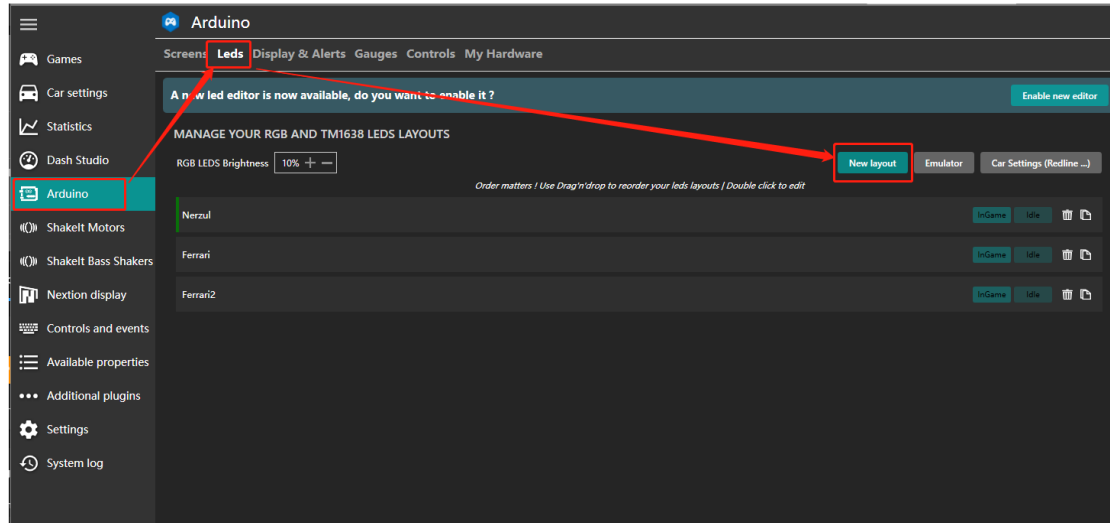


- You can use the cluster in simhub now

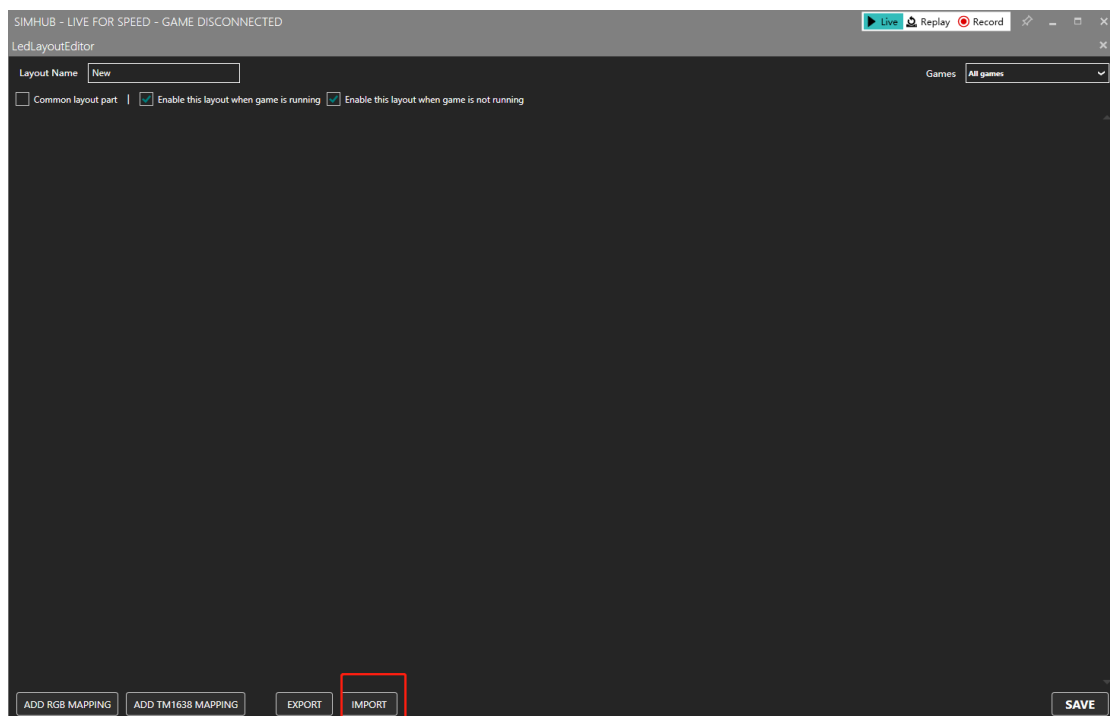
Insert the led setting

- if your simhub version is below 7.3.2 ,continue
- If your simhub version is higher than 7.3.0 ,[click here](#)

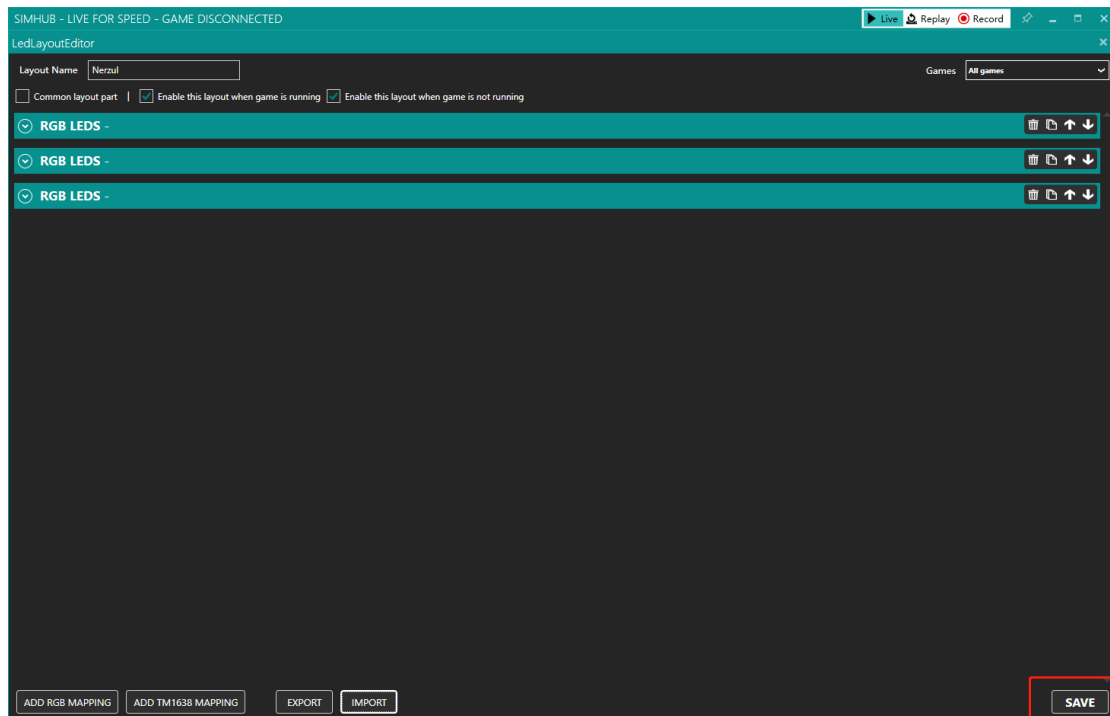
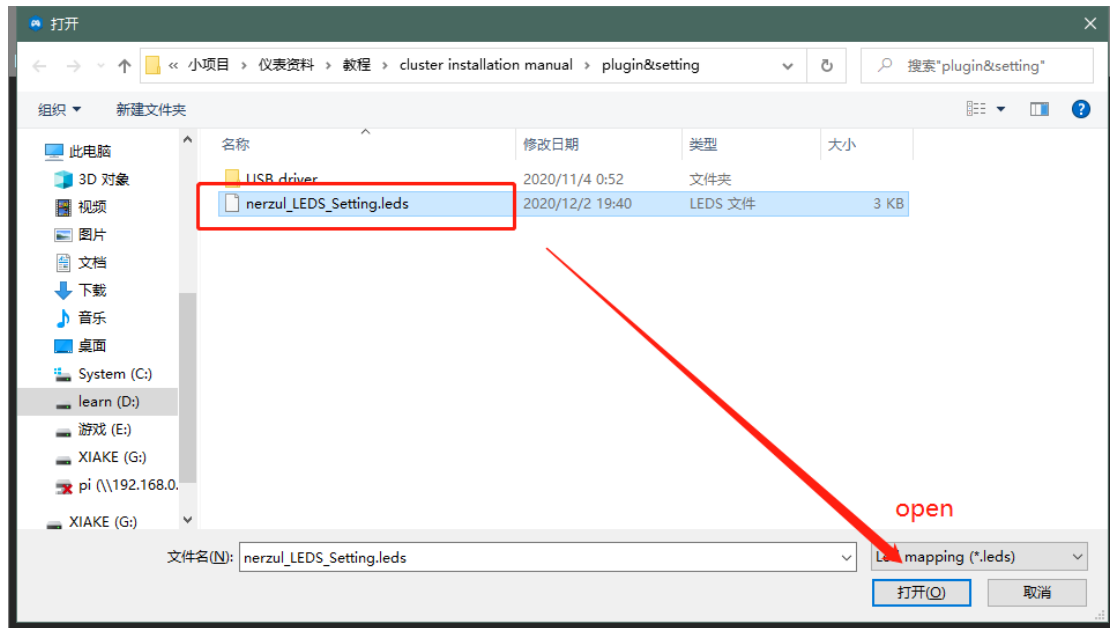
Click the New layout in “Leds”.



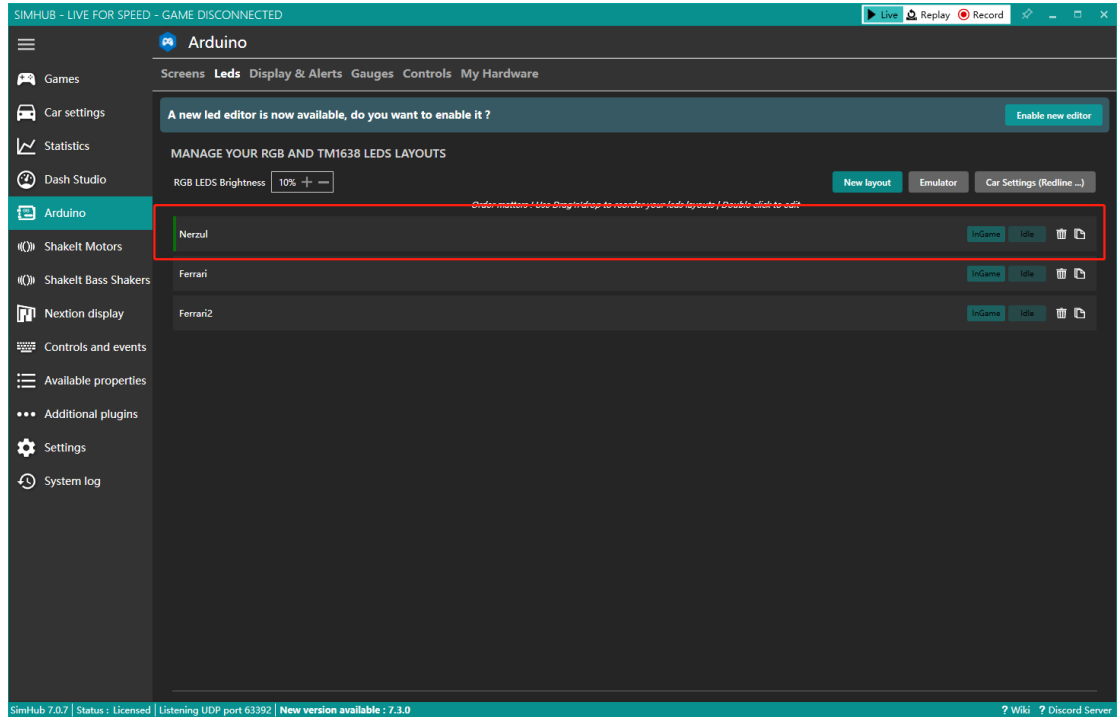
Click IMPORT button



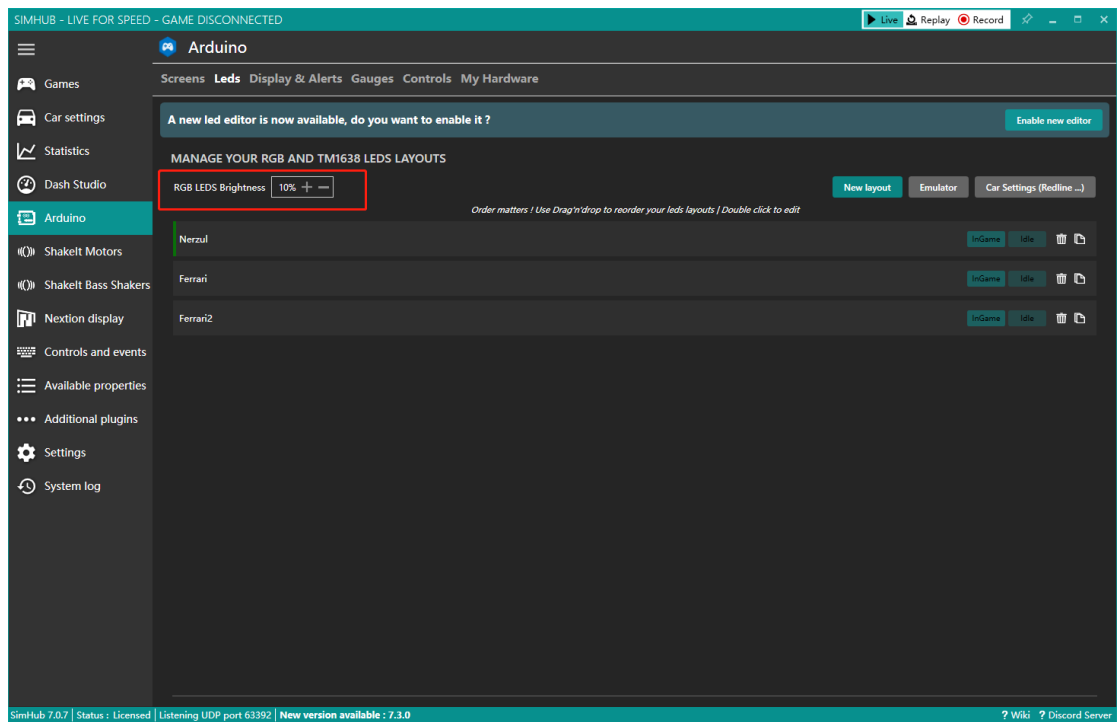
Select the “nerzhul_LEDS_Setting.les” and click “open”,then save the layout.



Make sure the leds layout we imported in the first of the list.

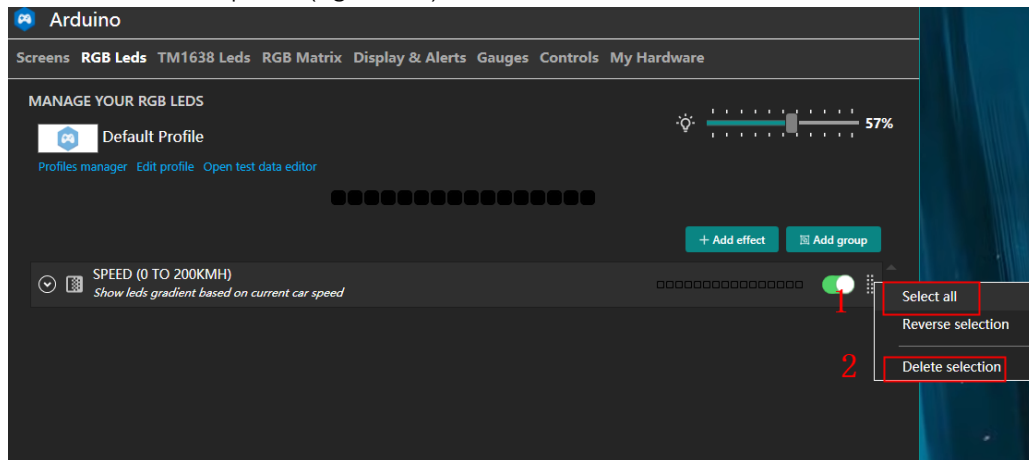


● Config the Brightness of the les

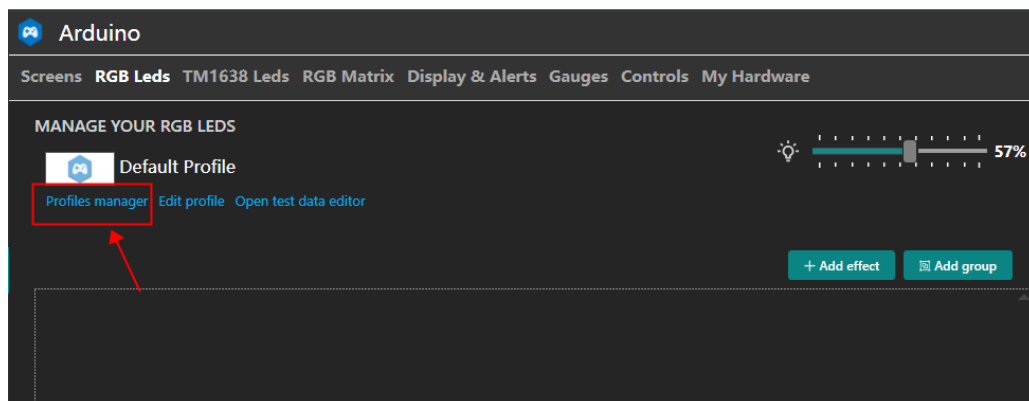


The new led layout with “RGB Leds”

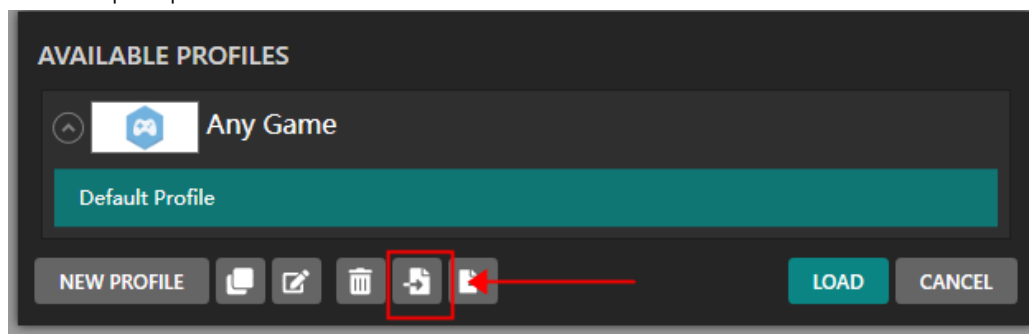
Delete the default profile(right click)



Click the “profiles manager”



Click “import profiles”



Select the “*.ledsprofile”

名称	修改日期	类型	大小
SIMHUB7.3.2.ledsprofile	2021/2/25 20:44	LEDSPROFILE 文件	4 KB

Σ(N): SIMHUB7.3.2.ledsprofile

Leds effects profile (*.ledspr

打开(O) 取消

Then click the yes button with the “profile import “message box , and then click the load button.

Profile import

The profile Default Profile already exists, do you want to overwrite it ? Otherwise a new profile will be created.

是(Y) 否(N) 取消

AVAILABLE PROFILES

Any Game

Default Profile

NEW PROFILE

LOAD CANCEL

Now the led setting is finished ,you can test it with the test mode

MANAGE YOUR RGB LEDS

Default Profile

Profiles manager Edit profile Open test data editor

EFFECT GROUP

LED TEST DATA EDITOR

Use test data

Game status

Game running

Car model

Engine

RPMS

RPMS redline reached

Low fuel alert (remaining laps)

GEAR

TRIGGER ENGINE START

Pits

Pit limiter ON

Is in pit lane

Delta

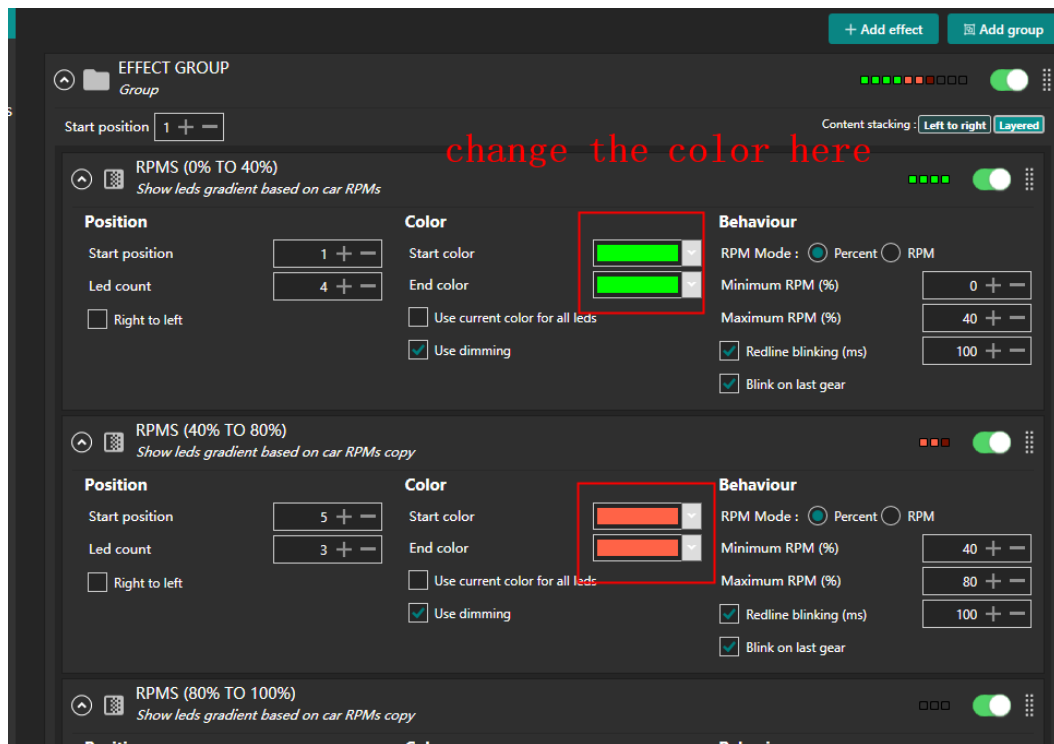
Session delta

All time best delta

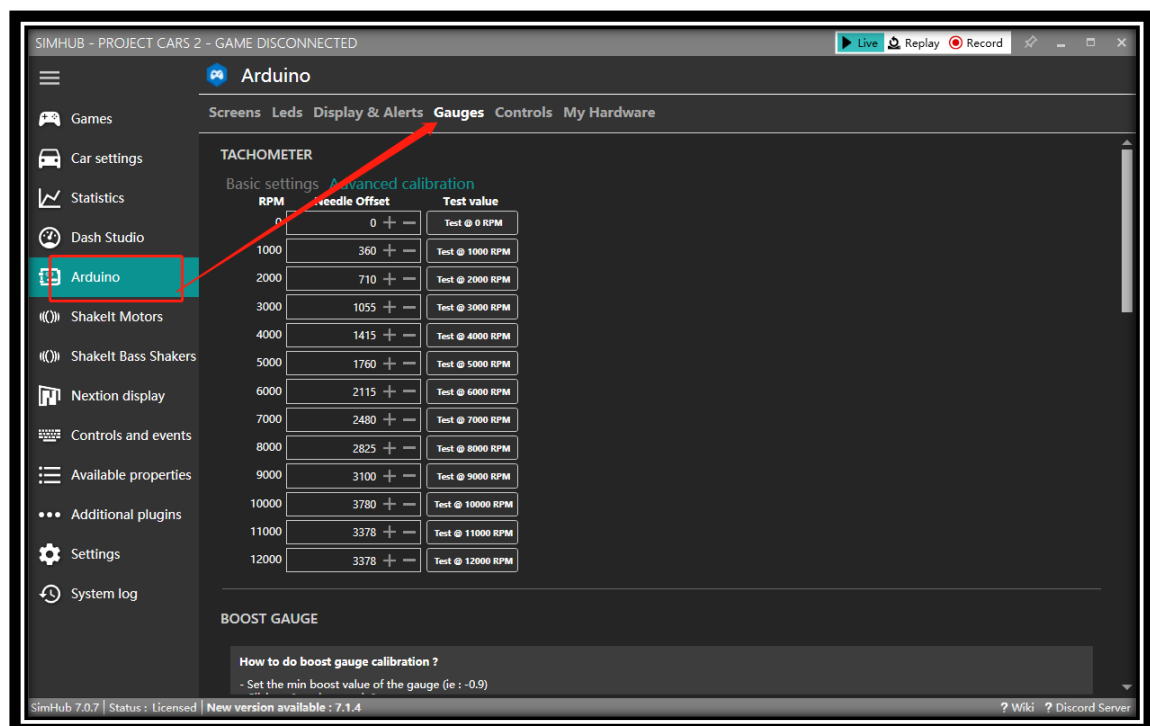
Assists

ABS enabled

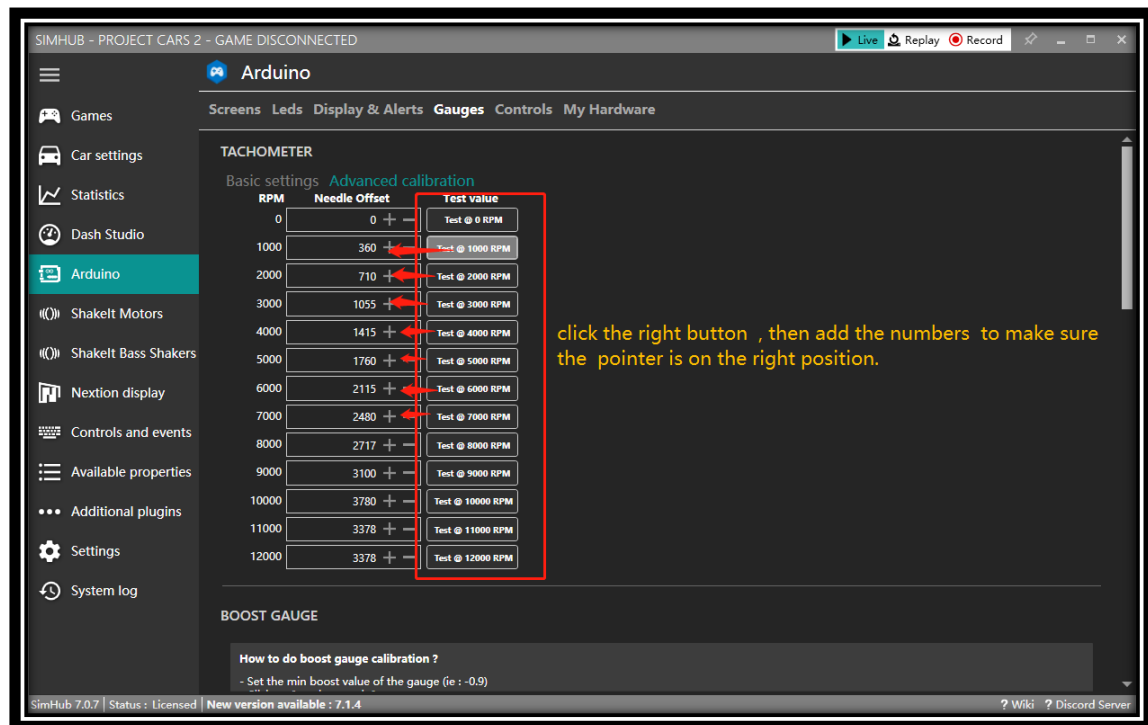
ABS active



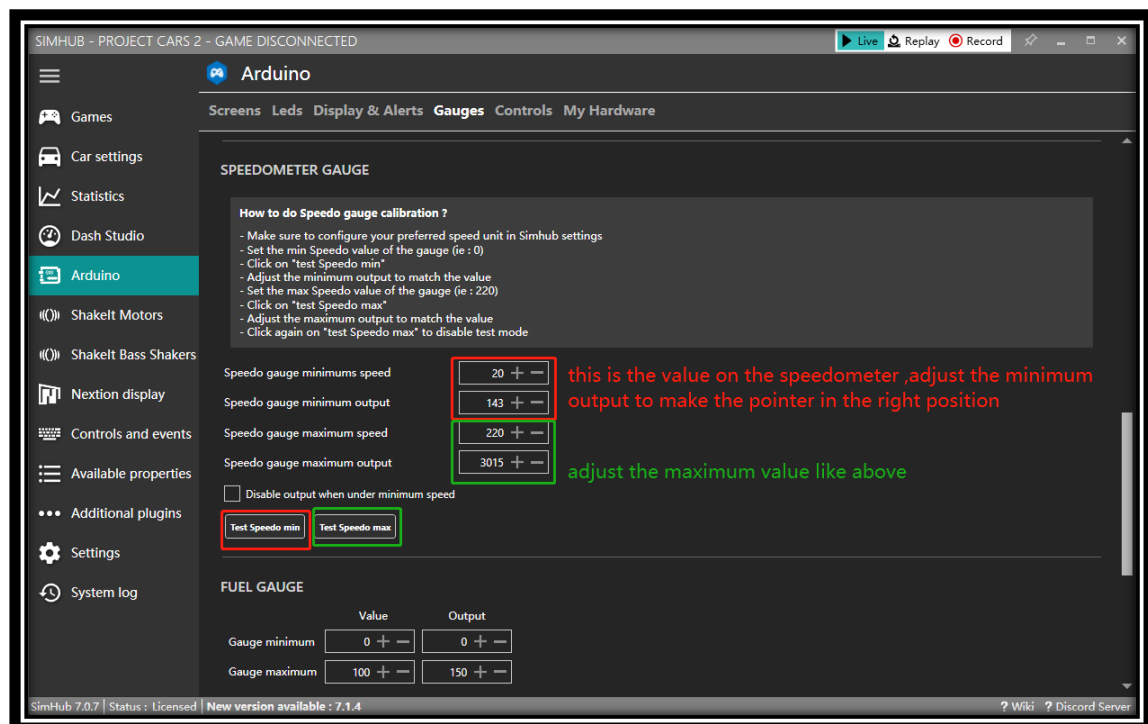
Configure the “Gauges”



Setting the tachometer

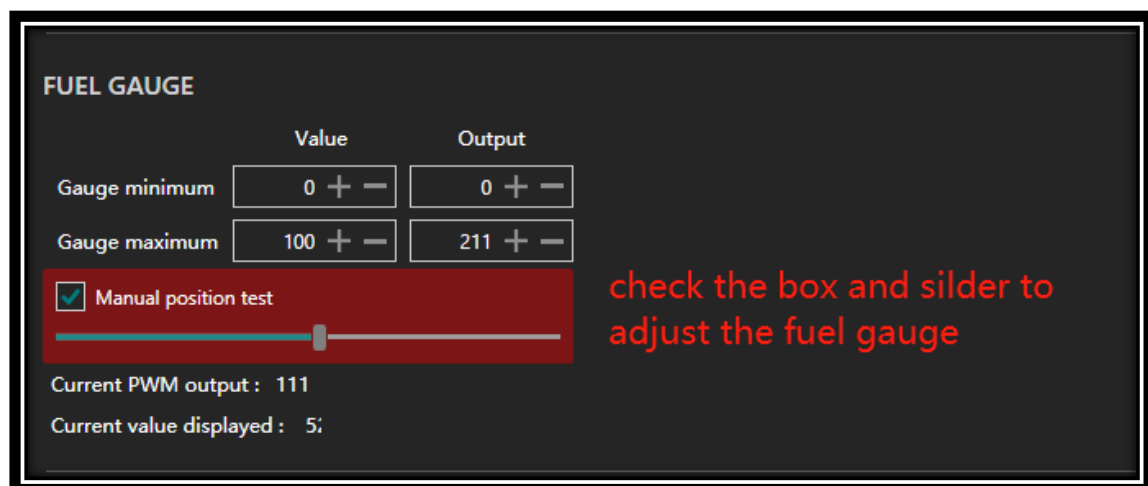


Speedometer

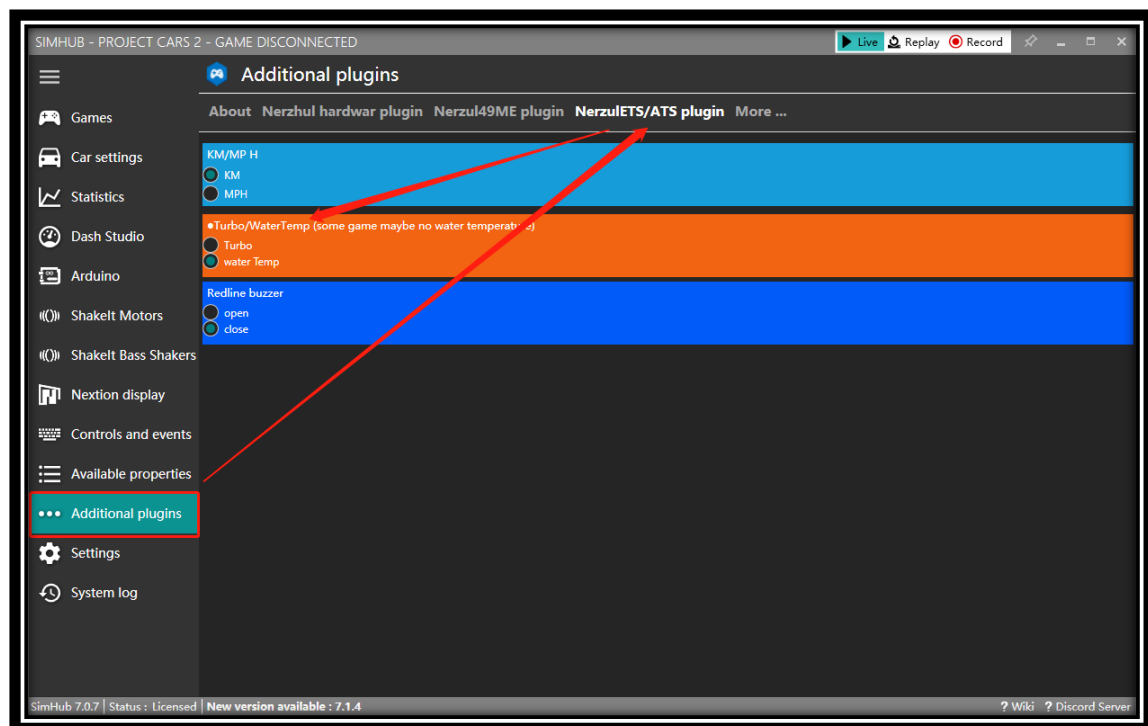


Remember to uncheck the Test button when you start the game , otherwise the cluster

will be no response.

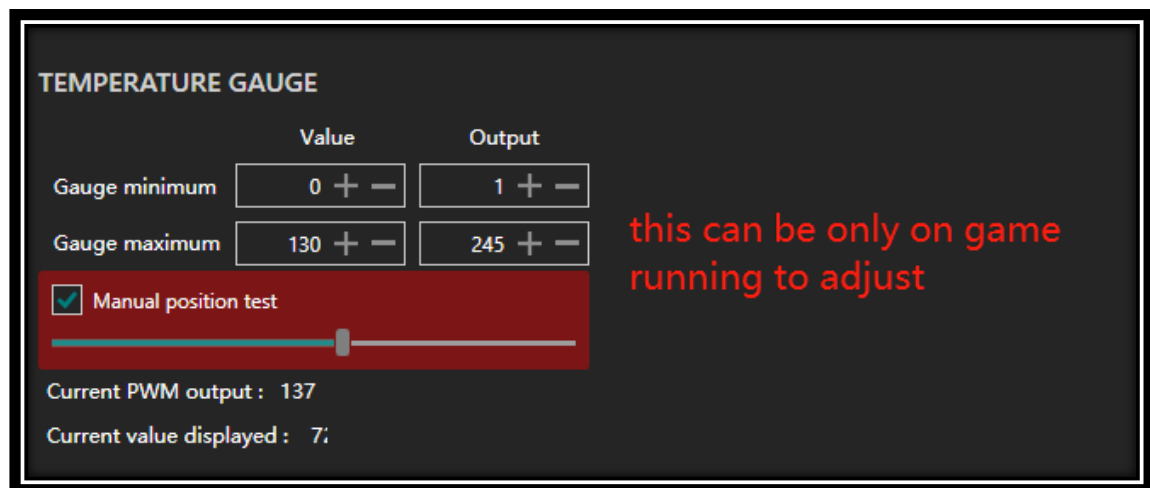


When you start game ,rember to uncheck the test box.



Switch the turbo and water temp showing





All the lights only can be works on “ETS/ATS “ or “OSMI2”game .

This is only a temporary tutorial, please contact me at Aliexpress if you don't understand anything else