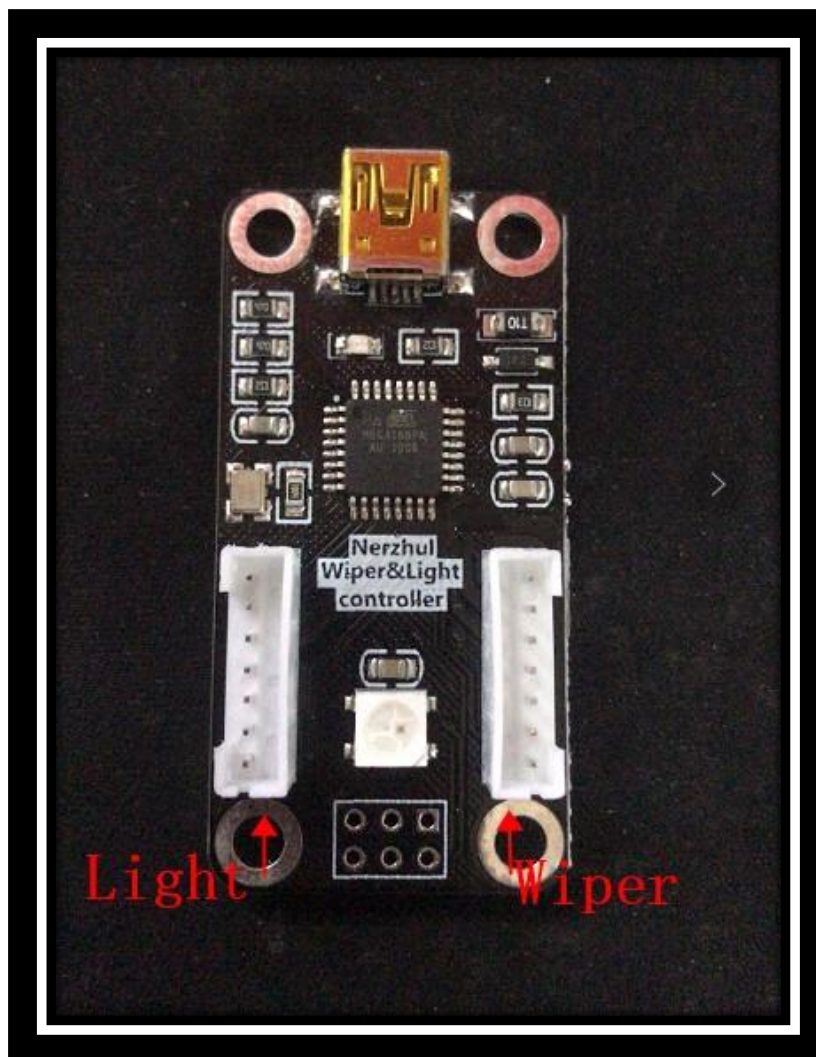


Notice:

pleas be gently to pull out and plug the USB cable, rude behavior may cause irreversible damage of the PCB board.

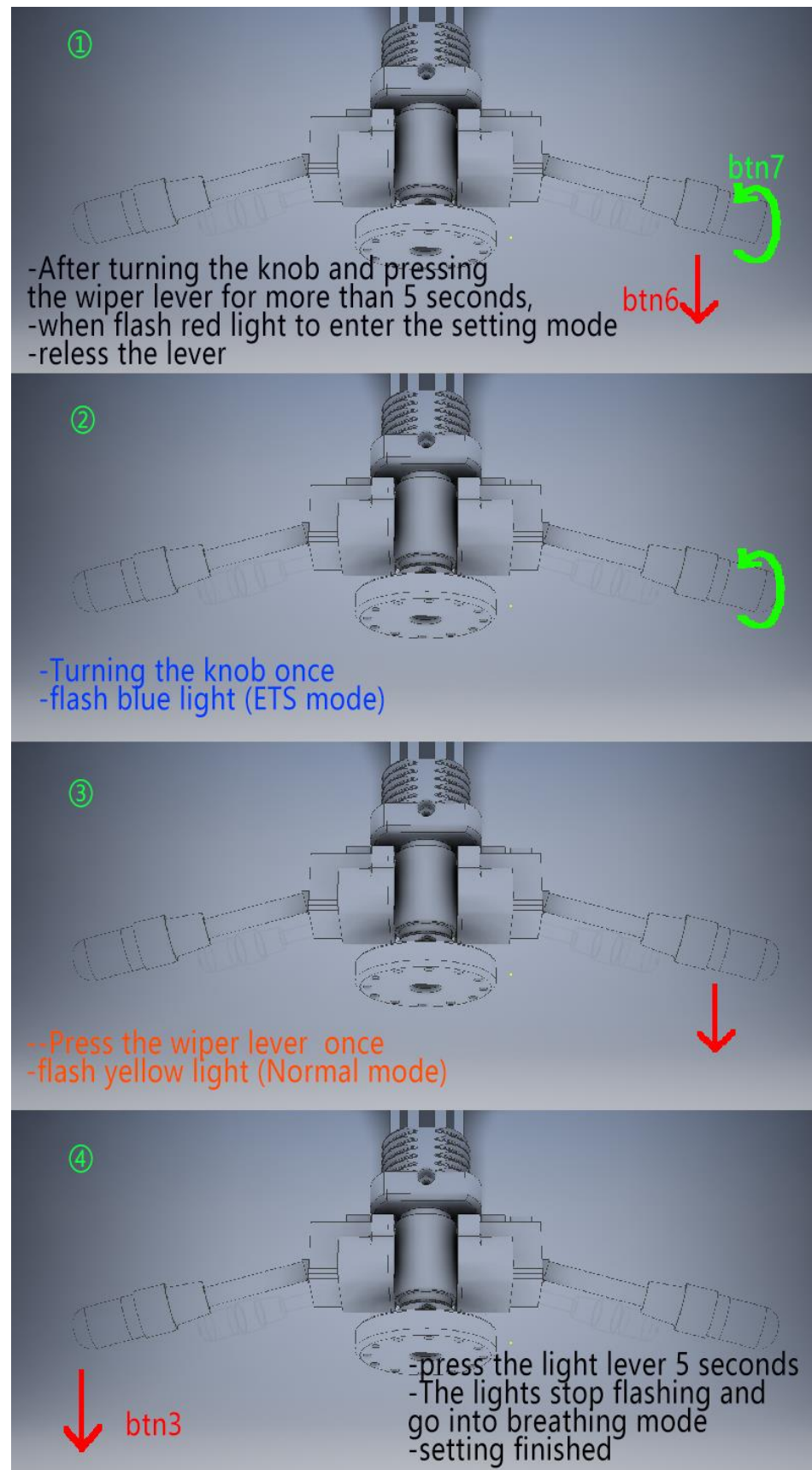
How to connect the wires:



How to set Key Mode:

Mode1:(Blue light) ETS Mode (Wiper and Light Mode switch Recognize as a single keys)

Mode2:(Yellow light) Normal Mode(Wiper and light Mode is Recognize as separate keys)



GAME SETTING(ETS Mode):

start the game , go to the controls setting add the NWTC to the last line. Then you can setting the buttons on the “keys & buttons ”(please setting the buttons on the “Secondary”)

Uncheck the “Automatic blinker turn off”



Recommended settings

Left-Turn Indicator	[Joy 按钮 5
Right-Turn Indicator]	Joy 按钮 4
Hazard Warning	F	Joy 按钮 2
Light Modes	L	Joy 按钮 1
High Beam Headlights	K	N / A
Beacon	O	N / A
Horn	H	N / A
Air Horn	N	N / A
Light Horn	J	Joy 按钮 3
Wipers	P	Joy 按钮 0

Gearbox Switch Automatic/Sequential	N / A	N / A
Start/Stop Engine	E	Joy 按钮 7
Start/Stop Engine Electricity	N / A	N / A
Parking Brake	Space	Joy 按钮 6

Notice:

1, Dont set the “Wipers Back” , just set the ” Wipers” is working . If you set the “Wipers

Back”, you should to clear it.

2, if the car status is not fit the hardware , just press the “esc ” button and set the hardware to the right position . Or use the keyboard to adjust the status in game.